



PONY CLUB.
VICTORIA



Dressage & Showjumping State Championships 2019

2-3 MARCH 2019 | Pony Club Victoria Equestrian Centre

EVENT SCHEDULE

EVENT ENTRIES CLOSE: 7 FEB 2019 | STRICTLY NO DOGS ALLOWED

EVENT SECRETARY: Coral Byrne, 250 Booley Road, Gheringhap 3331 | E: cozb@live.com.au | M: 0408 520 546

Scan here to
find directions
to PCVEC





Contents

Introduction	4
Rules and Policies	4
Venue	4
Event Entries	5
Closing Date: 7th FEB 2019	5
Event Entry Fees & Extras	5
Refund Policy	5
Eligibility	5
Competition Information	6
Dressage	6
Showjumping	6
Course Walks	6
Substitutions	6
Competitor Numbers	7
Queries and Protests	7
Code of Conduct	7
Presentations	7
Individual Competitions:	7
Teams Competitions:	7
Disclaimer	7
Catering	8
Accommodation	8
On Site Camping	8
PCVEC facilities:	8
Off Site Accommodation	8
Trade Village	9
Horse Yards	9
PCVEC Yard Coordinator	9
Horse related services	9
Showjumping program (Saturday)	10
The Competition & Manner of Judging	10
Determining Final Awards & Placings	11
Dressage Program (Sunday)	12
Dressage Tests	12
Final Placings & Awards	12
Championship Awards	12
Dressage (Teams)	13
Zone Qualifying Standards	13
Official Photographer	13
First Aid	13

Introduction

Pony Club Victoria proudly presents the HORSELAND Dressage and Showjumping State Championships at the Pony Club Victoria Equestrian Centre, Yarra Junction- Noojee Rd, Gladysdale.

Event Overview

The championships are comprised of two disciplines these being dressage and showjumping and is conducted over two days.

Therefore, a combination may compete in both disciplines.

Dressage consists of grade 1 for individuals and grades 2, 3 and 4 for teams of three.

Two dressage tests are conducted for each grade.

Showjumping consists of grade PA for individuals and grades PB, PC and PD for teams of four. However, teams of three may also compete. The total points of the best three riders per class are tallied for the team result.

Each combination must be selected through the zone qualifying competition(s) or the official zone qualifying process and is subject to the zone representative's approval, in accordance with the PCV Handbook of Bylaws.

Rules and Policies

The competitions are conducted in accordance with the current PCV Rules for the year in which the Championship is conducted.

- PCV Gear Rules
- PCV Handbook of By-laws
- PCV SunSmart, SmokeFree and Alcohol Policies
- PCV Code of Conduct
- PCV Child Safe Policy

Venue

Pony Club Victoria Equestrian Centre

Yarra Junction - Noojee Road Gladysdale

(closest number 655 but is on the opposite side of the road)

Scan the QR Code to get google map directions!



Event Entries

Closing Date: 7th FEB 2019

Rider online entry

Zone Secretaries are to email or send hard copy – Express Post - to Event Secretary, Coral Byrne coz@live.com.au or hard copy 250 Booley Road, Gheringhap Vic 3331. Entry form must include, the relevant information of the qualified riders and three emergencies, team manager name with their email address and mobile number. Vet and Medical Forms, and the names, email address of their Zone volunteers

- Qualified Riders will then be sent an email inviting them to register their attendance at the event and book and pay for Event Entry fee, Horse Yards, Dinner Tickets & Merchandise via their MyPonyClub Member Profile.

- All entries will be verified by the Zone Secretary for eligibility and finally approved by the Zone Rep.

Event Entry Fees & Extras

Event Entry Fees

- \$90/Rider/Discipline

(Saturday & Sunday Competition)

Official Dinner (Optional)

- \$28.50/meal - 2 course dinner will be provided at PCVEC on Saturday night

Merchandise

- Event T-Shirt \$40 until the 7/2/2019, after this will be \$50 and may need to be posted out after the event.

Refund Policy

- Event Entry refund requests for all State Level Events will be no more than 14 Days after the last day of the competition.

- Requests for a refund must be accompanied by a Medical Certificate or Veterinary Certificate.

- The organising committee may withhold an administration fee of up to 25% of the total entry fee.

Eligibility

- PCV Membership cards are not required at the State Competition but they must be inspected thoroughly at Zone qualifying competitions to ensure eligibility is in accordance with the PCV Handbook of By-laws.

- Riders who have been in pony club for more than 2 years and are aged 14 years & over must have obtained their "C" Certificate in order to compete at any state or national competition. As per the criteria for state events in the PCV Handbook of By-laws 34.11.a.

Competition Information

Dressage

The maximum number of entries per grade is 30 combinations

Grade 1

Each Zone may enter three individual combinations (horse and rider). If a Zone is unable to enter three combinations into grade 1 dressage, other Zones may enter additional combinations, including riders with a second qualified mount, which are then subject to a ballot.

Grades 2, 3 and 4

For Zone teams comprising three qualified competitors in each grade.

Showjumping

Maximum entries per grade are 40 combinations.

Grade PA

Each Zone may enter four individual combinations (horse and rider). If a Zone is unable to enter four combinations into PA grade, other Zones may enter additional combinations, including riders with a second qualified mount, which are then subject to a ballot.

Grades PB, PC and PD

For Zone teams comprising four or three qualified competitors in each grade, best three scores to count as determined by the individual points system.

Zones may enter individual qualified competitors if it cannot field a team. Individual competitors will be placed in a composite team.

These teams will be eligible for the overall Winner Award.

Team Managers

Showjumping Team Managers are to ensure their team members are correctly attired for the Course Walk (Showjumping Rules 2.9.b) and team members may be accompanied by their Team Manager or a suitable mentor. The time allowed for walking the course will not exceed 20 minutes.

Course Walks

- Team members should wear correct competition attire for the course walk. Helmet not required.

(Refer Showjumping Rules 2.9.b)

- Team members may be accompanied by their Team Manager
- The time allowed for walking the course will not exceed 20 minutes.

Substitutions

If a combination that has been entered into the State Championships is subsequently unable to compete, another eligible combination may be substituted. However, the substitution must be:

- A combination that has qualified under the Zone qualifying selection criteria, except in PA grade, where a rider may enter another eligible horse;
- Endorsed by the Zone Representative

- Notified by the Zone Representative, to the Organising Secretary, not later than one hour before the commencement of the first event of the State Competition.

Competitor Numbers

When required, competitor numbers must be fully visible at all times while mounted, under penalty of elimination.

Competitor numbers must be displayed by one of the following methods:

- Bridle: on both the left and right side of the bridle, competitors to provide their own.
- Saddle cloth: on both left and right side of the saddlecloth, competitors to provide their own
- Breast Plate: competitors to provide their own.
- Body Numbers: competitors to provide their own.

Queries and Protests

As per PCV Handbook of By-laws

Code of Conduct

PCV Code of Conduct applies. Any conduct unbecoming of a Team Manager, parent and/or a competitor – including bad language, is a reportable incident and may lead to a Team or Individual disqualification on the day.

Presentations

Presentations will be unmounted and full uniform must be worn. (Helmet optional)

Individual Competitions:

Grades 1 (Dressage) and Grade PA (Showjumping):

- PCV Medallion & Sash and Inscribed Rug to winning combinations; Sashes for 2nd - 6th.

Teams Competitions:

Grades 2, 3 and 4 (Dressage) & Grades PB, PC and PD (Showjumping):

- PCV Perpetual Trophy (to be retained by PCV office) for winning teams
- PCV Medallions and Inscribed Rug to each winning team member; sashes for 1st to 6th.
- Tri colour Sash for the overall Individual

Winner of Grades 2, 3 and 4 (Dressage) and Grades PB, PC, PD (Showjumping)

Rosettes awarded:

- 1ST - 6TH for individual placings in each dressage test and each show jumping event

Disclaimer

Neither the organising committee of this competition nor the PCV accepts any responsibility whatsoever for any accident, damage, injury or illness to horses, riders, ground spectators or any other person or property.

Catering

On-site catering is available. A two course delicious spit roast buffet with a choice of desserts will be available for dinner on Saturday night at a cost of \$28.50/night. Meals must be ordered and paid with your online entry.

A canteen will operate from Friday afternoon (1st March) all day Saturday and Sunday (2nd & 3rd March)

Accommodation

On Site Camping

- Camping is permitted on-site at Pony Club Victoria Equestrian Centre (PCVEC)
- Sites are unpowered, booking is not required.
- Generators are only to be operated during reasonable hours i.e. not after 10pm at night.
- Campers are NOT to connect to any power or water supply.
- Fires are not permitted.

PCVEC facilities:

- Yards
- Wash bays
- Toilets
- Trade Village opportunity to grab some great bargains
- Canteen available for breakfast, lunch and snacks
- Delicious catered evening meal Saturday
- Strip shopping and take away in Yarra Junction

Off Site Accommodation

Accommodation close to the venue is available at

- Best Western Motor Inn (14.2ks from PCVEC) 3815

Warburton Highway, Warburton

Ph 0359669166

- Warburton Motel (15.6 km from PCVEC). 4

Donna Buang Road, Warbuton

Ph 0359662059

- Deloraine Homestead (2.8 km from PCVEC)

355 Tarrango Road, Gladysdale

Ph 0359671758.

- BIG 4 Badger Creek Holiday Park (26.1km from PCVEC)

419 Don Road, Healesville

Ph 0359624328.

- Healesville Tourist Park (27.0 km from PCVEC)

322 Don Road, Healesville

Ph 0359624398

- Baroona Cottage (1.7ks from PCVEC)

25 Baroona Road

Gladysdale

Ph 0421 023 265

Trade Village

A trade village will be at the event. We encourage you to support these traders whilst at the event.

Horse Yards

PCVEC Yards

PCVEC has 104 yards available for hire

- \$15.00/night/yard. Yards must be booked with your online entry.
- Saturday Showjumping Riders need to have yards cleaned out by 2.30pm.
- Dressage Riders can have yards from 3pm Saturday.

PCVEC Yard Coordinator:

Emily McDonald

M: 0417 130 611

E: emilygmcd@hotmail.com

Emily is also available to assist riders with any queries during the event

BYO Yards

Portable Yards should be of solid construction. The use of electrified tape, strings, ropes or chains, is not permitted at Pony Club Events. Electric tape can be used as a top line or as a "standoff" on a steel or solid yard, but not as a standalone yard.

Horse related services

Horse Feed, Hay, Straw

Baroona Produce and Pet Supplies

2434 Warburton Hwy,

Yarra Junction 3797 Ph 59 671 671

Orders received by 1.00pm on Friday March 1st and Saturday March 2nd will be delivered on site daily by 2.30pm. Payment by credit card at time of order. 5% discount to all competitors www.baroona.com.au/produce/

Veterinarian

The Equine Practice

525 Maroondah Hwy, Lilydale

Ph: 0434 378 463 (Terms- Payment at time of consultation)

Farrier

No farrier available

Competition Program

Showjumping program (Saturday)

Starting time 8.30 AM. Course Walk 8.00 AM (to be confirmed)

The Competition and Manner of Judging

The following events are run under Table A and the specified Articles contained in the FEI rules

Class 1 – Competition in two Phases – (Article 274.1,5.6)

1. This competition comprises two phases run without interruption, each at an identical or different speed, the finishing line for the first phase being identical with the starting line for the second phase.

First Phase	Second Phase	Placing
5.6 Table A not against the clock. Minimum 5 obstacles, Maximum 7 obstacles in first phase	Table A Against the clock Remaining obstacles (Total of minimum 11 and maximum 13 obstacles in both phases)	According to the aggregate penalties (faults on obstacles and penalties for exceeding the time allowed in both phases) and, if necessary, according to the time of the 2nd phase

Class 2 - Competition over Two Rounds – (Articles 273.1; 2.1; 3.4.2; 4.4)

1. This competition comprises, with the same speed, two courses, identical or different, either in track or in number of obstacles or in the dimensions of the obstacles. Each rider must participate with the same horse. Riders, who have been eliminated or who have retired during the first round, may not take part in the second round and may not be placed.

2. All the riders have to take part in the first round. The following go forward to the second round according to the conditions of the schedule:

2.1 All riders

First round	Second round		Jump-off
Table A	Table A	Starting order	Starting order
3.4.2 Not against the clock	Against the clock	Reverse order of penalties in the 1st round; Riders retain their drawn order in case of equality of penalties	Same as 2nd round

4. Placing

4.4 Riders will be placed according to the Penalties and time in the jump-off. The remaining Riders will be placed according to aggregate Penalties over both rounds and the time incurred in the second round. Riders not taking part in the second round are placed according to their penalties and time in the first round (if the first round is against the clock) or according to the Penalties in the first round (if the first round is not against the clock).

Determining Final Awards and Placings

Showjumping – Individual

Individual placings determined for each event according to the class articles for competition (see page 9).

Points System

- The number of riders starting in the first class will determine the point allocations for the subsequent classes. E.g. if 22 riders start in the first class, the scoring system for the subsequent classes are based on 22 riders. If only 20 riders start the second class the scoring system remains at 22.
- The winner of each class will be awarded points equal to the number of riders in the first class plus 1 point. E.g. 22 starters + 1 = 23 points
- Every rider that completes a class will score points according to their placing in the field.
- 1st place = 23 points (22+1)
- 2nd place = 21 points (22-1)
- 3rd place = 20 points
- 22nd place = 1 point
- If a rider is eliminated in a class they will not be awarded points for that class. However, they are eligible to score points in the other classes.
- These individual rider points for each class are added together progressively throughout the day to determine the overall individual award.

The rider with the highest points is the winner.

- If the Scores are tied, equals will be separated using the best result in the nominated class. In 2019 this will be Class 2.

Showjumping – Team

- Teams may consist of 3 or 4 riders with the best three scores determined as per the individual points system to count.

In order to be eligible for a team placing at least three members of the Team must complete each scheduled class without elimination

- At least three Team Members must complete in a Class for the Team to post a score in that class.
- Points obtained by the three highest placed riders in each Team for each class are totalled for that class.
- In the case of equality of points for the final placing, the higher placed team is the one whose lowest classified competitor of the three has the best result in the nominated class. In 2019 this will be Class 2.

Dressage Program (Sunday)

Starting Time: 9.00AM (to be confirmed)

Dressage Tests (Revised)

Grade 1 | EA tests 3A and 3B (see below)

Grade 2 | EA tests 2B and 2C (see below)

Grade 3 | PCV tests 3D and 3E

Grade 4 | PCV tests 4D and 4E

Equestrian Victoria have changed their tests for 2019. As a result, the tests advertised in the original 2019 Dressage and Showjumping Schedule for Grades 1 and 2, will no longer be available on their website.

The PCA National Competition will be using the new 2019 tests, but will not be making an announcement until February.

In order to give our riders ample time to learn these new tests the SJ&D Sub Committee have decided to change the tests to the following:

Grade 1 Elementary Test 3A will replace Test 3.1

Grade 1 Elementary Test 3B will replace Test 3.2

Grade 2 Novice Test 2B will replace Test 2.2

Grade 2 Novice Test 2C will replace Test 2.3

There is no change to Tests for Grades 3 and 4.

We know it is not ideal to make a change like this after it has been advertised, but the Committee could see no sense in our members riding a test at States that will be different to that being ridden at the National event.

Dressage Tests cannot be called at State events.

Final Placings & Awards

Dressage (Individual Tests)

- Each rider will be placed according to their score in each test and Championship points allocated as per method below.
- Equal placings will be separated for each dressage test. See Handbook of Bylaws - Rule 38.2.a
- The higher total collective marks will decide the higher placing
- If these marks are equal, the placing remains tied.

Championship Awards (Individual - [Grade 1])

- The number of points allocated will be based on the number of riders commencing in the first test of the competition.
- The winner of each test will be awarded points equal to the number of riders who start, plus 1 point.
- Every rider that completes a test will score points according to their placing in the field

e.g. if there are 27 riders who commence the first test of the day

- 1st place = 28 points (27 + 1)
- 2nd place = 26 points (27 - 1)
- 3rd place = 25 points
- 27th place = 1 point
- If a placing is tied and cannot be split after applying the count back system (see above), the points for the tied placings are added together and divided by the number of tied competitors.
- If a rider is eliminated in a test they will be awarded zero (0) points for that test. However, they are eligible to score points in the other test.
- Points awarded at the completion of each test will be totalled to determine the final results of the Individual Championship
- In the event of an equality of the total points at the completion of the two tests comprising the Championships, the rider who obtained the highest point score in the most difficult test ("A" being the easiest) will be the outright winner or higher place getter. See Handbook of Bylaws; 38.2.b
- If these scores are equal, places will be determined using the higher total collective marks in the most difficult test
- If there is still a tie this process is repeated with the next highest numbered test until a winner is determined or until there are no further tests to compare, in which case the placing remains tied.
- A competitor must have ridden both tests to be eligible for an award.

Dressage (Teams)

Teams: Grade 2, Grade 3 and Grade 4

- The final placings of each test are established by ranking riders according to the dressage scores gained and then allocating the corresponding points as per the Grade 1 individual scoring. The aggregate point scores for each team member are added together to give the final team score.
- Each team member must ride both tests before the team is eligible for an award
- If an equal place exists in any grade, the process detailed in the PCV Handbook of Bylaws for "Separating Equality of Scores" for Teams will be applied:
- In case of equality of points, the higher placed team is the one whose lowest classified competitor of the three has the best result
- If these figures are equal, the placing remains tied.
- Teams of three are eligible for a team award
- If one or more riders are eliminated then the Team is ineligible for a Team award.
- Teams with less than 3 team members may ride but are not eligible for a Team award.

Zone Qualifying Standards

Zone qualifying showjumping courses should, when possible, be at the maximum heights and spreads permissible, as the courses at the state championships will be at these standards.

Official Photographer

Derek O'Leary

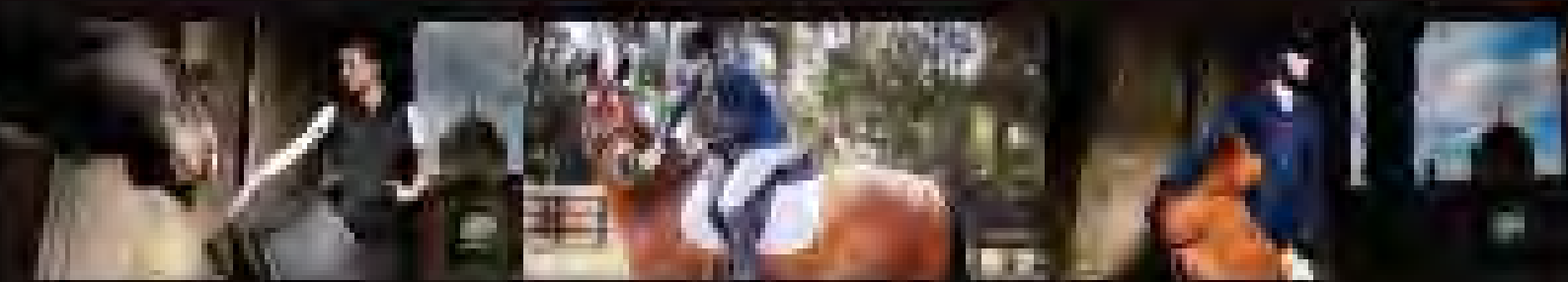
For all the great action on shots from the day go to www.derekoleary.com.au



COMING TO A HORSELAND NEAR YOU

SADDLE

— C E N T R E —



We are offering you an exceptional experience with our new Saddle Centre. Find a NEW wider range of saddles, expert service and professional advice. You will be able to find the saddle that fits just right.

ANKY



Blaze



Collegiate

CRISTY



Love Data



Kieffer



Parham



SEB



Wheeler

